

Rab31

Catalog Number: 21063

Gene Symbol: RAB31

Description: Anti-Rab31 Rabbit Polyclonal Antibody

Background: Rab31 is a member of the Rab-subfamily of Ras-related small GTPases and plays a role in the trans-Golgi network to endosome trafficking.

Immunogen: A synthetic peptide from the C-terminal region of human Rab31

Tested Applications: ELISA, WB, IHC, IP

Recommended Dilutions:

ELISA	1:100-1:5000
WB	1:100-1:2000
IHC	1:10-500

Concentration: 0.2 mg/ml

Host: Rabbit

Clonality: Polyclonal

Purity: Purified from serum

Format: Liquid

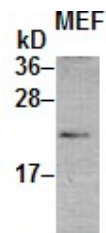
Preservative: No

Constituents: PBS (without Mg^{2+} and Ca^{2+}), pH7.4, 150 mM NaCl, 50% glycerol

Species Reactivity: Rab31 antibody recognizes Rab31 from vertebrates.

Storage Conditions: Store at $-20^{\circ}C$. Avoid freeze / thaw cycles

Western blot:



WB: anti-Rab31 pAb

MEF cell lysate was used for Western blot with anti-Rab31 polyclonal antibody (Cat. # 21063).

FOR RESEARCH USE ONLY. NOT FOR DIAGNOSTIC APPLICATIONS